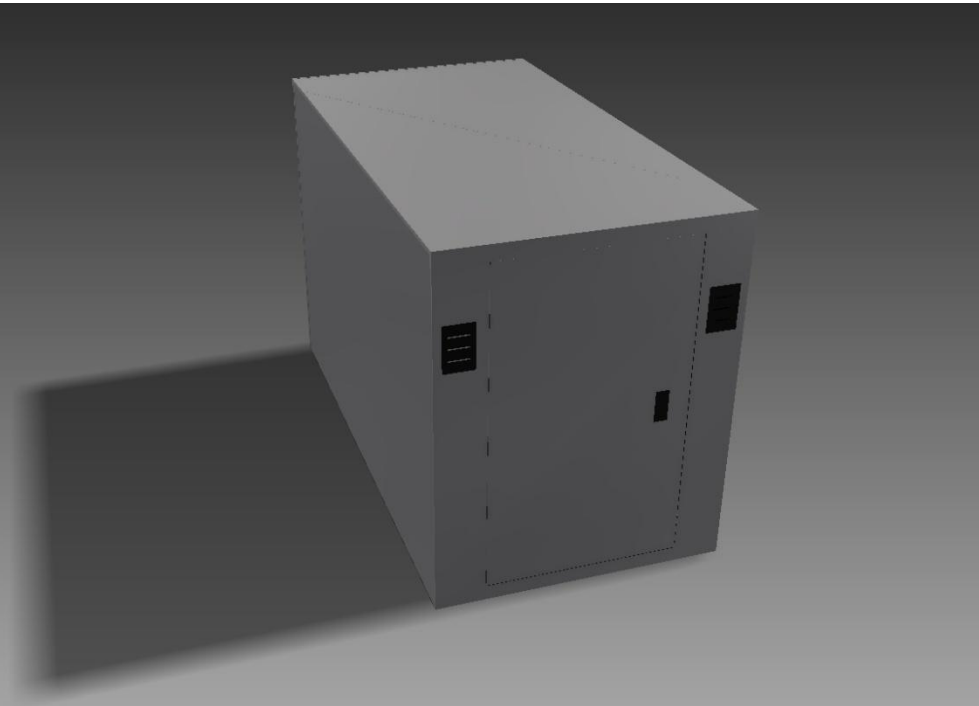


# BKS-1002

## “Bike Shelter”



### Anchoring Methods

RCLF offers three different ways with which to incorporate your beautifully crafted piece into its surroundings

- Surface mount (-SM)
- In-ground mount (-IG)
- Freestanding (-FS)

### Customization

RCLF takes pride in our ability to provide plaques, decals, and custom artwork to incorporate into almost any of our products. Whether you're looking to brand your furniture, or add a touch of personal design, RCLF has the ability to customize our furnishings to suit your personal flair. Inquire for more information.

## Basic Information

Height: 48"  
Length: 75"  
Depth: 39"  
Weight: 345 lbs

## Materials

- 18 GA solid steel sheet metal
- 16 GA solid steel sheet metal
- 14 GA solid steel sheet metal
- 11 GA solid steel sheet metal

## Construction

- Top/Bottom:** Both pans are constructed from 14 GA sheet metal and attach with interior studs for anti-theft protection
- Corner Supports:** Constructed from cut and bent 11 GA sheet metal. Supports sit just inside top and bottom pans
- Walls:** Constructed from 16 GA sheet metal. Sides mount to corner supports with studs
- Divider:** Internal divider is constructed from 18 GA sheet metal to allow for two bikes
- Details:** Louver vents bolt to locker from the inside for anti-theft protection. Comes standard with two-point, keyed lock.

## Powder Coat Finish Procedure

1. Metal substrate is shot-blasted to remove contaminants and create an optimal etched profile for powder adhesion.
2. Substrate is then washed with an alkaline rinse to further enhance coating effectiveness.
3. An industrial sealer is applied to the piece to inhibit rusting.
4. The piece is then coated with an epoxy powder coat primer and subsequently cured in our oven according to manufacturer's guidelines.
5. The metal returns to the powder booth for application of UV-resistant, polyester powder coat finish and is cured again in the oven. The furniture emerges with a beautiful and durable exterior that is capable of withstanding the rigors of demanding public spaces.

## Warranty

- The Renaissance team warrants the quality of every site amenity that leaves our factory. If the product is installed according to our recommendations, we will guarantee the frame construction for the life of the item. All other components are guaranteed for three years after shipment.



2807 Mary Linda Ave. | N.E. Roanoke, VA 24012

540.342.1548 | [www.rclfsitefurnishings.com](http://www.rclfsitefurnishings.com)